

# Leading Chocolate Manufacturer Protected their Factory Environment with Fever Detection Screening Solution

## Overview:

The company is one of the leading manufacturers of the delicious and number one chocolates in the confectionery industry, these chocolates are considered favorites in all age group of individuals. They manufacture & supply different varieties of chocolate pan India basis from their Baramati Manufacturing Unit. Network Techlab (I) Pvt. Ltd. (NTIPL) is associated with them for more than 10 years now, by providing the service for their IT Infrastructure, Physical Security Solutions, Power & Data Center Solutions. Network Techlab takes care of its 125 CCTV Infrastructure installed in the entire factory & warehouse. Network Techlab is working with this company to protect their factory premises, managing their IT Infrastructure and simplifying its complex story of technology.

## Challenge:

Being in to FMCG Manufacturing and having only plant in India, The Company wanted to reopen there plant on the urgent basis during COVID19 Scenario. Opening up Factory and taking precautionary measures for all the employees who were working in the factory was the primary objective, Company was identifying solutions that will help them to reopen their factory during COVID19 scenario. Company was trying to evaluate many solutions but couldn't find out solutions that will be deployed fast and so that they can reopen plant in short period of time.

## Solution:

From Network Techlab, We suggested Fever Detection Camera Solution which is now widely used to prevent workplaces from elevated skin temperatures. This was a Best fit solution for them and could be deployed within short period of time. After a discussion with team from a company we arranged a live demo of solution to make them understand How Fever Detection Solutions Works and How It will solve their problem so that they can reopen plants with ease. They were convinced with the solution and found it the most useful technology during COVID19.

## Benefits:



Detection of Elevated Temperature and Restrict the Entry



Faster and Safe than Close range Thermometers



Factory Environment is Protected from Suspicious Body Temperature



Great Cost Saving Because of Integration with Existing VMS Solution



Employee Health and Safety is covered

Customer Name :  
**A Leading Chocolate Manufacturing Company**

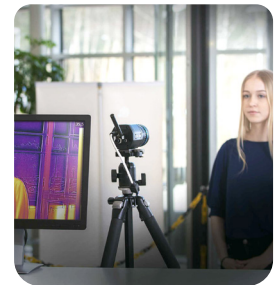
Product :  
**Hikvision Thermal Camera Solutions**

Owner :  
**Pratik Chedda**

Location :  
**Pune, Maharashtra**

Domain :  
**FMCG Manufacturing**

Solution :  
**Thermal Camera Solutions for COVID19**



**We made integration possible with the current Video Management System which was installed 3 years ago, This helped in great Cost Saving. Further Project is executed with the approval of Branch Head.**