

## contents

### 16 mm mounting diameter, molded-plastic



#### 3SB2

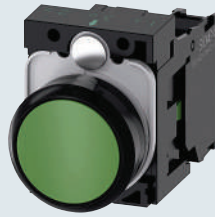
Page

#### Selection and ordering data

- 3SB22 complete units 11/7
- 3SB20 pushbuttons and lens assemblies 11/9
- 3SB2 holders, lampholders and contact blocks 11/11
- 3SB29 inserts, legend plates, and accessories 11/13

Introduction	11/4
Technical specifications	11/5
Dimension drawings	11/20

### 22 mm mounting diameter, plastic black



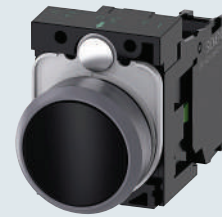
#### SIRIUS ACT - 3SU1

Page

#### Selection and ordering data

- Complete units 11/38
- Compact units 11/45
- Actuating and signaling Elements 11/47
- Accessories 11/105 – 11/115; 11/130 – 11/152

### 22 mm mounting diameter, plastic with metal matte front ring



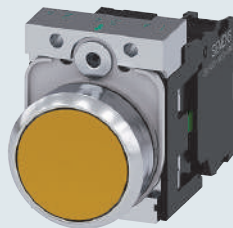
#### SIRIUS 3SU1, plastic round

Page

#### Selection and ordering data

- Complete units 11/59
- Compact units 11/65
- Actuating and signaling Elements 11/67
- Accessories 11/105 – 11/115; 11/130 – 11/152

### 22 mm mounting diameter, metal shiny



#### SIRIUS ACT - 3SU1

Page

#### Selection and ordering data

- Complete units 11/79
- Compact units 11/85
- Actuating and signaling Elements 11/88
- Accessories 11/105 – 11/115; 11/130 – 11/152

### 30 mm mounting diameter, metal matte



#### SIRIUS ACT - 3SU1

Page

#### Selection and ordering data

- Actuating and signaling Elements 11/98
- Accessories 11/125 – 11/128; 11/153 – 11/155

### 22mm enclosures and communication devices



#### SIRIUS ACT - 3SU1

Page

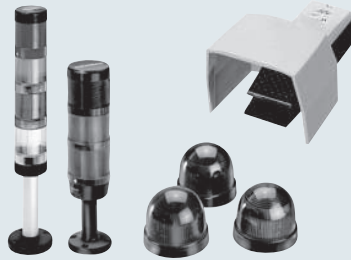
#### Selection and ordering data

- Empty enclosures 11/118
- Complete enclosure 11/119
- AS-Interface 11/123
- Accessories 11/125 – 11/128; 11/153 – 11/155
- Two-hand operation 11/129

# Push Button Units and Indicator Lights

## contents

### SIRIUS signal columns, built-in signal beacons and foot switches



#### 3SE2, 3SE3 Foot Switches Page

##### Selection and ordering data

- Plastic and metal enclosures 11/160

##### Lamp & LED version, enclosure diameters 50 and 70 mm

- 8WD42 selection & accessories 11/164
- 8WD44 selection & accessories 11/115
- 8WD53 beacons 11/119

Introduction	11/161
Technical Specifications	11/163
Dimension drawings	11/171

### Standard duty control stations



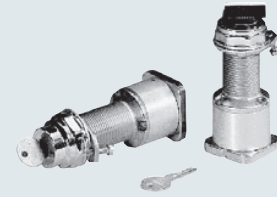
#### Class 50 Page

##### Selection and ordering data

- Standard duty Type 1 and 1B 11/175
- Heavy duty Type 4 11/180
- Class 50 accessories 11/181

Introduction	11/174
Technical Specifications	11/174
Dimension drawings	11/182

### Type 7/9 hazardous location – 3/4”-14 NPSM



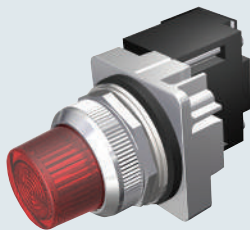
#### SIRIUS ACT – 3SU1 Page

##### Selection and ordering data

- Push pull complete units 11/184
- Pilot lights 11/185
- Selector switches 11/187
- Push to test/illuminated push buttons 11/186
- Cam selection guide 11/189
- Stations and enclosures 11/190
- Accessories 11/191

Introduction	11/183
Technical Specifications	11/183

### NEMA 30.5 mm mounting diameter, corrosion resistant, watertight & oiltight

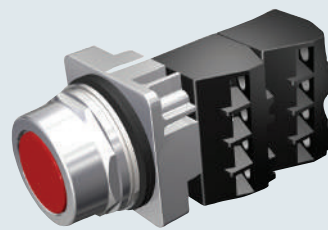


#### Class 52 Page

##### Selection and ordering data

- Momentary Push Button, Non-Illuminated 11/195-11/196
- 2 & 3 Position Push-Pull Mushroom Head Devices, Non-Illuminated 11/197-11/198
- 2 & 3 Position Push-Pull Mushroom Head Devices, Illuminated 11/199-11/200
- 2 Position Twist-to-Release Mushroom Head Devices, Non-Illuminated 11/201
- 2 Position Twist-to-Release Mushroom Head Devices, Illuminated 11/202
- Indicator Light 11/203-11/204

Introduction	11/143
Technical Specifications	11/178
Dimension drawings	11/169



#### Class 52 Page

##### Selection and ordering data

- Push Button & Push-to-Test, Illuminated 11/205-11/206
- Push Button Mushroom Head Devices, Illuminated 11/207
- Selector Switches, Illuminated 11/208
- Selector Switch Short & Long Lever, Non-Illuminated 11/209-11/210
- Keyed Selector Switch 11/211-11/212
- Selector Push Button 11/214

### 30.5 mm heavy duty control stations, Type 4/4X/12/13 encl.



#### Class 52 Page

##### Selection and ordering data

- Class 52 assembled stations with standard offerings 11/225
- P30 enclosures only 11/227
- Custom station order form 11/227
- Legend plates 11/228